

# Fraunhofer Center for Digital Diagnostics ZDD<sup>®</sup>

## Advanced Diagnostics and Digitally Enabled Healthcare

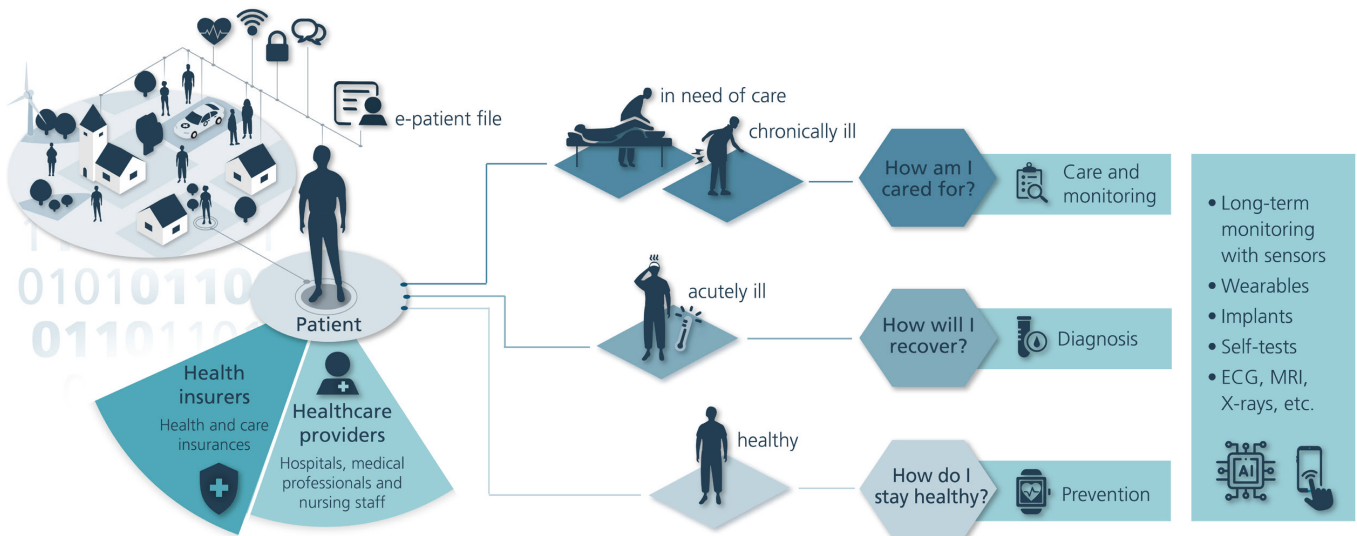
### We deliver solutions for the provision of healthcare in rural areas

Rural healthcare is facing critical challenges, including rising life expectancy, an ageing population and a simultaneous reduction in healthcare providers. These factors create new demands on medical care, particularly with the increase in chronic illnesses and multimorbidity. The shortage of specialists within the healthcare system further intensifies these issues.

Significant distances to medical facilities pose additional obstacles for many patients, resulting in substantial financial and time burdens related to travel for doctor's appointments.

Digital innovations, such as mobile diagnostics, telemedicine, and integrated digital ecosystems, provide essential solutions to address these challenges. These integrative care concepts close existing gaps in medical care and facilitate access to high-quality treatments.

Your partner for innovation in digital diagnostics – from sampling to decision



Vision of the Fraunhofer ZDD® for future digital diagnostics in healthcare.

## We provide innovation for business and society

Our strengths lie in the sectors “Intelligent Medicine” and “Artificial intelligence”. This know-how, combined with our overarching goals for affordable healthcare and digital value creation, puts us at the forefront of industrial customers and research partners. Together with you, the ZDD® develops standards for new technologies and offers the opportunity to improve healthcare with new ideas.

## We are experts in digital diagnostics

The joint efforts of three renowned Fraunhofer Institutes are at the heart of the ZDD®.

The **Fraunhofer Institute for Cell Therapy and Immunology, Bioanalytics and Bioprocesses branch IZI-BB** takes on a leading role. Its expertise in the development of point-of-care diagnostic systems, particularly for rural areas, forms the basis for rapid and reliable diagnoses. In addition, the IZI-BB develops innovative bioanalytical methods and optimizes bioprocesses for the production of diagnostics and therapeutics.

These competencies are complemented by the **Fraunhofer Institute for Experimental Software Engineering IESE**, which contributes significantly to the digital transformation in the healthcare sector. The institute develops pioneering software solutions for digital healthcare and integrates telemedical applications into existing systems. The IESE also conducts research on cyber-physical systems to increase patient safety.

The **Fraunhofer Institute for Cell Therapy and Immunology IZI** contributes its extensive experience in the

development of diagnostic procedures for infectious diseases and is a leader in the fields of cell and gene therapy as well as personalized medicine.

In addition to the core institutes, the ZDD® utilizes the entire Fraunhofer network for customer projects

## We design the future of healthcare together with you

Rely on our expertise and innovative strength to jointly develop customized solutions for current and future challenges. With our partnership, you benefit from pioneering technologies and contribute to an effective healthcare system. By working closely together, we will improve healthcare in terms of efficiency, accessibility and sustainability. Take the opportunity to implement innovative projects and to change the future healthcare landscape.

### Kontakt

Dr. Ullrich Stein  
Main Coordinator  
info@zdd.fraunhofer.de

Fraunhofer Center for  
Digital Diagnostics ZDD®  
Am Mühlenberg 13  
14476 Potsdam  
<https://s.fhg.de/zdd-fraunhofer-en>

